

Rosa

From: Audrey Baker [Audrey@IceCubes.NET]
Sent: Thursday, November 15, 2007 8:33 AM
To: rosa@turboairinc.com
Subject: Parts

Rosa,

Bev recommended that I contact you regarding Micro-Wave parts:

Model TMW-1100M
SN: S11M420474

They need a dome light Cover for the inside, could you provide the part number including list and our cost. Thank you in advance.

Audrey Baker
Commercial Refrigeration Service, Inc.
2501 W. Behrend Suite 39
Phoenix, Arizona 85027-4148

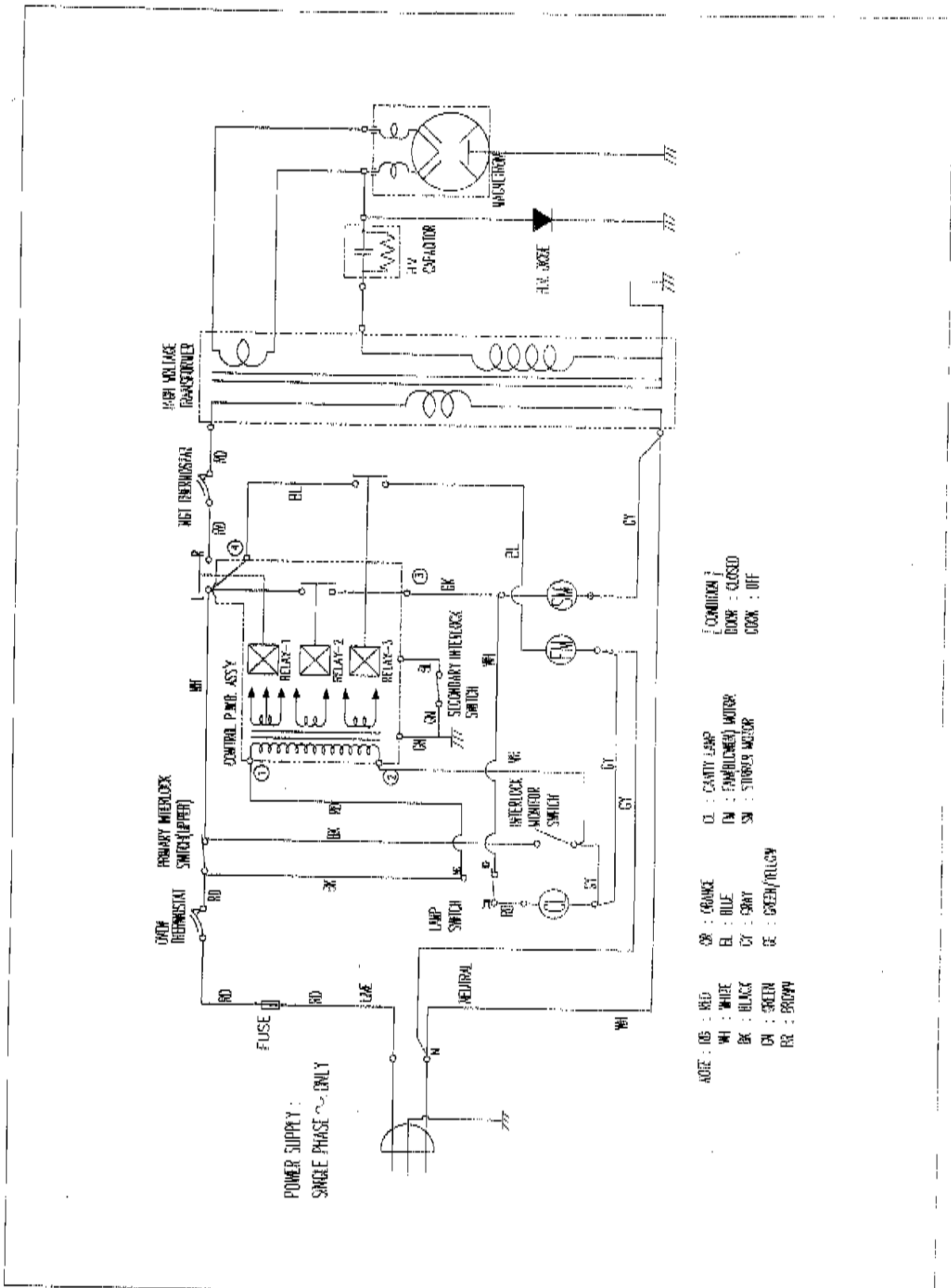
623-869-8881 Phone
623-869-8882 Fax
Audrey@IceCubes.net

Fax 6 pg. PS I dont have
a price list you can call
parts department to get
that information.

Thank you

Rosa

WIRING DIAGRAM (TMW-1100E)



| | | | |
|-------------------|--------------|---------|------------|
| Post-it® Fax Note | 7671 | Date | # of pages |
| To | Feros | From | Rosa |
| Co./Dept. | | Co. | |
| Phone # | | Phone # | |
| Fax # | 305-463-8893 | Fax # | |

100 E

| NO | NAME | SYMBOL | SPECIFICATION | PART CODE | Q'TY |
|----|-----------------|---------------------|---------------------------|------------|------|
| 1 | BUZZER | BZ1 | BM-20K | 3515600100 | 1 |
| 2 | CAPACITOR CERA | C1-9 | HIKF 50V 0.1MF Z AXIAL | CCZF1H104Z | 9 |
| 3 | CAPACITOR ELEC | EC2 | 50V RS 10MF (5X11) TP | CEXE1H100A | 1 |
| 4 | CAPACITOR ELEC | EC6 | 50V RSS 100MF (8X11.5) TP | CEXF1H101V | 1 |
| 5 | CAPACITOR ELEC | EC4 | 35V RS 220MF 10*20 | CEXE1V221A | 1 |
| 6 | CAPACITOR ELEC | EC7 | 50V RSS 220MF (10X16) TP | CEXF1H221V | 1 |
| 7 | CAPACITOR ELEC | EC5 | 35V RSS 1000MF (13X25) TP | CEXF1V102V | 1 |
| 8 | DIGITRON | DP1 | HNM-07MS12 | DHNM07MS12 | 1 |
| 9 | DIODE RECTIFY | D1-7, 9-11 | 1N4148 | DZN4148--- | 10 |
| 10 | DIODE RECTIFY | D12-15 | 1N4004A | DZN4004A-- | 4 |
| 11 | DIODE ZENER | ZD1 | UZ- 3.3BSB 1/2W | DZUZ3R3BSB | 1 |
| 12 | DIODE ZENER | ZD3,4 | UZ- 5.6BSB 1/2W | DZUZ5R6BSB | 2 |
| 13 | DIODE ZENER | ZD2 | UZ- 24BSB | DZUZ24BSB- | 1 |
| 14 | CONNECTOR WAFER | CN1 | YW396-07AV | 3519150540 | 1 |
| 15 | CONNECTOR WAFER | CN2 | TMP87CM14N | 13GS1P5C00 | 1 |
| 16 | CONNECTOR WAFER | CN3 | FCZ 254-12 | 441M367170 | 1 |
| 17 | IC MICOM | IC1 | YW396-07AV | 3519150540 | 1 |
| 18 | IC EEPROM | IC2 | BR9020-W | 137N9020W- | 1 |
| 19 | PCB MAIN | M187 | 90X90 | 3514328500 | 1 |
| 20 | R ARRAY | RA2,3 | RGLD4X104J | RA-85X104J | 2 |
| 21 | R ARRAY | RA1 | 6P(5) 1/8 100K OHM J | RA-86X104J | 1 |
| 22 | RESISTOR | R8 | 1/6W 200 5% | RD-AZ201J- | 1 |
| 23 | RESISTOR | R5,9-11,13-16,23,24 | 1/6W 1K 5% | RD-AZ102J- | 10 |
| 24 | RESISTOR | R18 | 1/6W 4.7K 5% | RD-AZ472J- | 1 |
| 25 | RESISTOR | R1-4,7,12,17,19 | 1/6W 10K 5% | RD-AZ103J- | 8 |
| 26 | RESISTOR | R26 | 1/6W 47K 5% | RD-AZ473J- | 1 |
| 27 | RESISTOR | R6 | 1/6W 1M 5% | RD-AZ105J- | 1 |
| 28 | RESISTOR | R28 | 1/4W 6.8 5% | RD-4Z689J- | 1 |
| 29 | RESISTOR | R25,27 | 1/2W 27 5% | RD-2Z270JS | 2 |
| 30 | RESONATOR CERA | CR1 | CRT 4.00MS | 5P4R00MTS- | 1 |
| 31 | SW RELAY | RY1 | G5G-1A DC12V | 5SC0101121 | 1 |
| 32 | SW RELAY | RY2 | CS11-12SH 1C 1P | 5SC0101128 | 2 |
| 33 | TRANSISTOR | Q1 | KRA-1266Y | TZTA1266Y- | 1 |
| 34 | TRANSISTOR | Q3,5,6,9 | KTC-106M | TZRC106M-- | 4 |
| 35 | TRANSISTOR | Q7,8 | KTC-3198GR | TZTC3198GR | 2 |
| 36 | TRANS POWER | LVT | DMR-1P5P | 5EPU035307 | 1 |
| 37 | VFD HOLDER | DPH | NYLON 66 | 3513001400 | 1 |
| 38 | WIRE COPPER | J4-6,8-13 | 1/0.52 TIN COATING | 85801052GY | 9 |
| 39 | WIRE COPPER | J1,7,14 | 1/0.52 TIN COATING | 85801052GY | 3 |
| 40 | WIRE COPPER | J2,3 | 1/0.52 TIN COATING | 85801052GY | 2 |

T MW-1100E

EXPLODED VIEW AND PARTS LIST (ELECTRICAL)

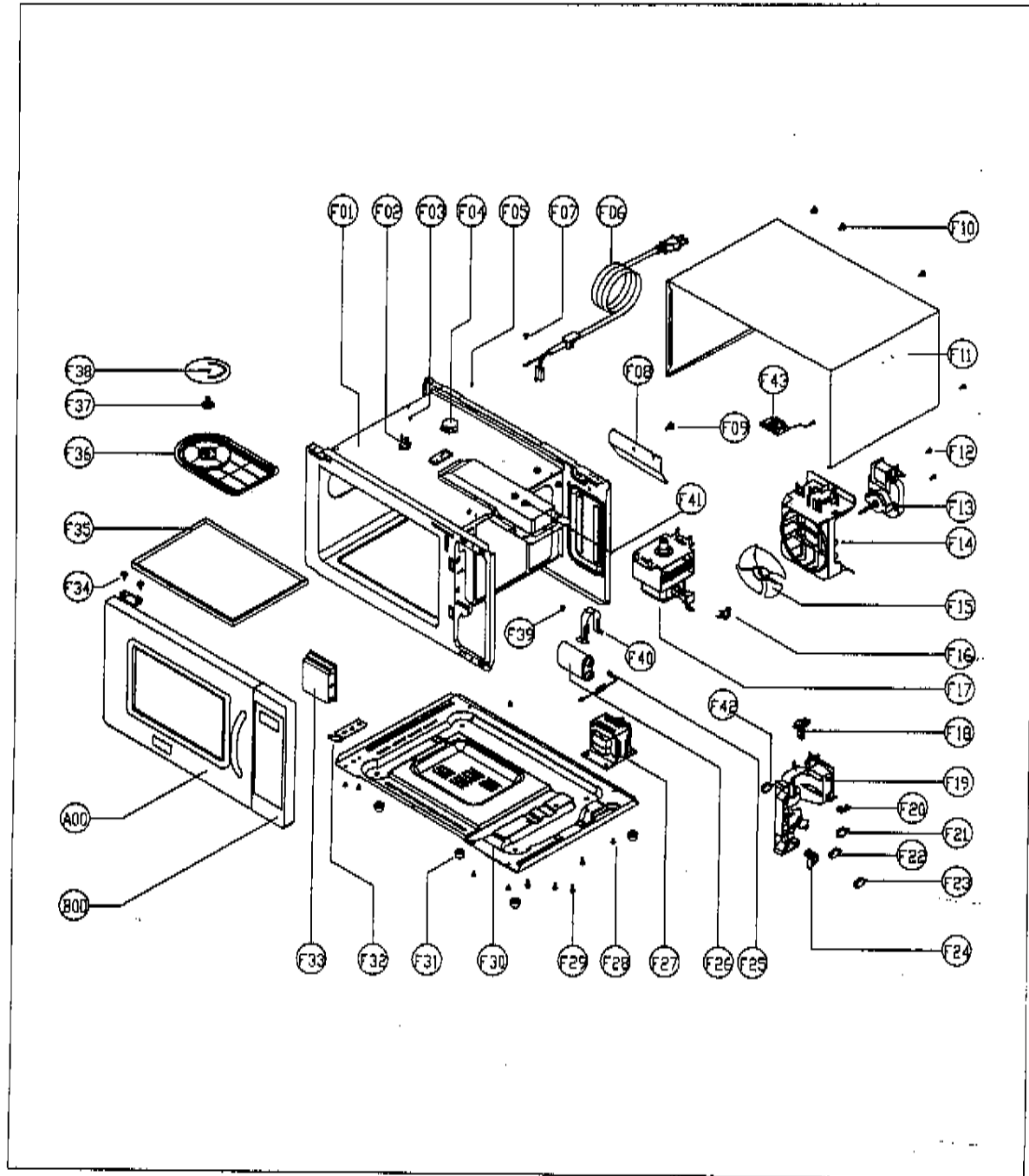
1. DOOR ASSEMBLY

Refer to Disassembly and assembly

2. CONTROL PANEL ASSEMBLY

Refer to Disassembly and assembly

3. TOTAL ASSEMBLY



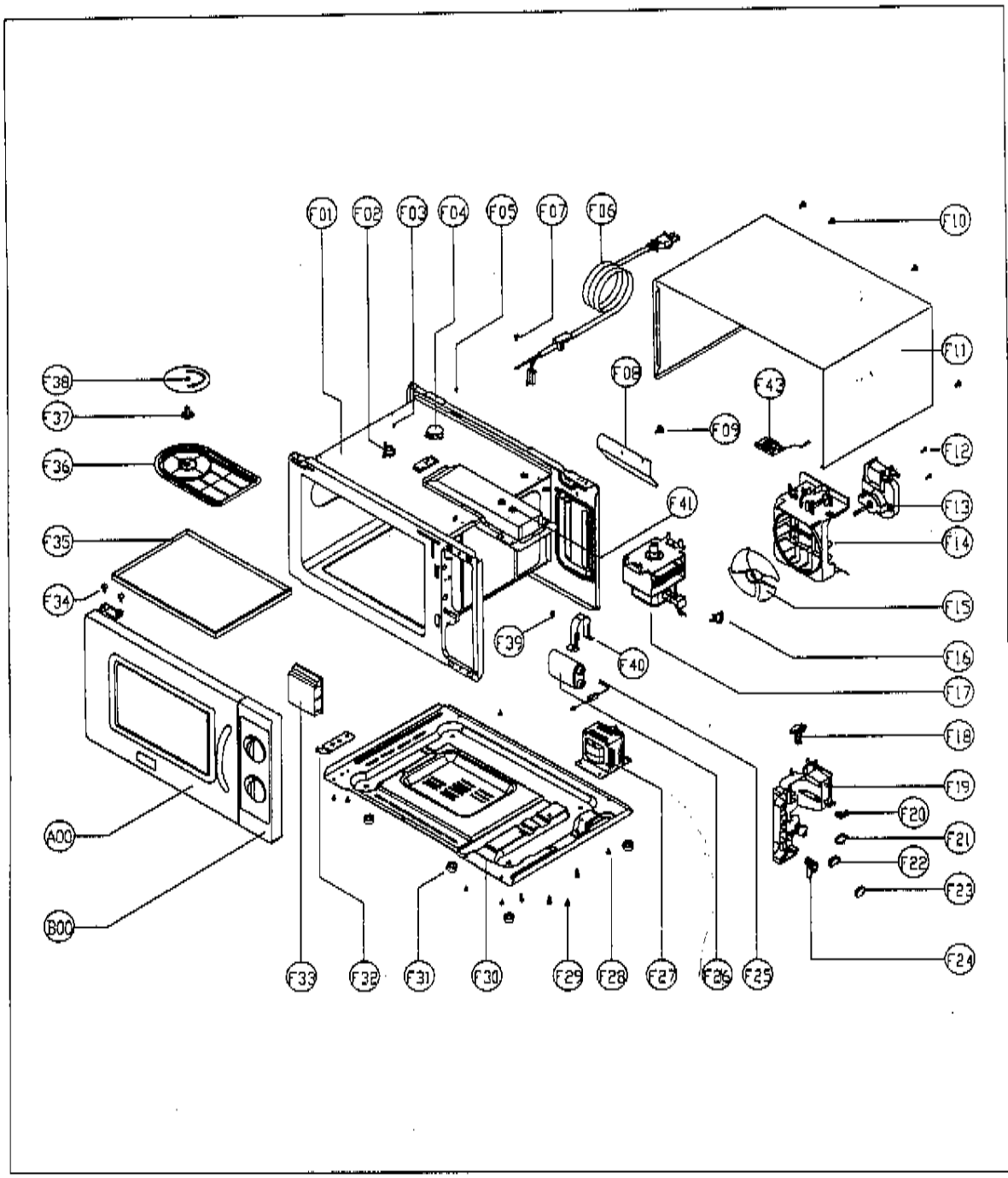
T MW-1100E

| NO | PART CODE | PART NAME | DESCRIPTION | QTY | NOTE | PUBLIC USE |
|-----|------------|--------------------|--------------------------|-----|-----------------|------------|
| A00 | 3511718600 | DOOR AS | KOR-1P55BA | 1 | | ✓ |
| B00 | 3518728700 | CONTROL-PANEL AS | KOR-1P55BA | 1 | | ✓ |
| F01 | 3516115700 | CAVITY AS | KOR-1P55BA | 1 | | ✓ |
| F02 | 3518905600 | THERMOSTAT | OFF:80 ON:50 H #187 | 1 | | ✓ |
| F03 | 7121400611 | TAP SCREW | T2S PAN 4*8 MFZN | 1 | | ✓ |
| F04 | 3966820710 | STIRRER MOTOR | 120V 2.4W ST-16 KX63MRAA | 1 | | ✓ |
| F05 | 7121400611 | TAP SCREW | T2S PAN 4*8 MFZN | 1 | | ✓ |
| F06 | 35113UANT5 | POWER CORD AS | 3*14AWG 60*60 120-RTML | 1 | KOR-1P55BA | |
| | 35113UHWT5 | | 3*14AWG 90*90 120-RTML | 1 | KOR-1P55BB | |
| F07 | 7122401011 | TAP SCREW | T2S TRS 4*10 MFZN | 1 | | ✓ |
| F08 | 3511409500 | OUTER COVER | SBHG 0.8T | 1 | | ✓ |
| F09 | 7272400811 | SCREW TAPTITE | TT3 TRS 4*8 MFZN | 1 | | ✓ |
| F10 | 7272400811 | SCREW TAPTITE | TT3 TRS 4*8 MFZN | 1 | | ✓ |
| F11 | 3510803320 | CABINET | PCM T0.8T | 1 | | ✓ |
| F12 | 7122401211 | TAP SCREW | T2S TRS 4*12 MFZN | 3 | | ✓ |
| F13 | 7121403011 | TAP SCREW | T2S PAN 4*30 MFZN | 2 | | ✓ |
| F14 | 3963822710 | MOTOR SHADE POLE | 120V 30W 15DWX1-K03 | 1 | | ✓ |
| F15 | 3512515300 | AIR GUIDE | PP | 1 | | ✓ |
| F16 | 3511800100 | FAN | PP GP20 | 1 | | ✓ |
| F17 | 3518903400 | THERMOSTAT | OFF:150 ON:80 H #187 | 1 | | ✓ |
| F18 | 3518003800 | MAGNETRON | RM259(STUD) | 1 | | ✓ |
| F19 | 3513601500 | LAMP | BL 125V 25W T25 C5A H18 | 1 | | ✓ |
| F20 | 3513816000 | LOCK | PP | 1 | | ✓ |
| F21 | 3513702100 | LEVER MICRO SW | POM | 1 | | ✓ |
| F22 | 4415A17352 | MICRO SW | VP-533A-OF SPNO #187 | 1 | | ✓ |
| F23 | 4415A66910 | MICRO SW | VP-531A-OF/SZM-V16-FA | 1 | | ✓ |
| F24 | 4415A17352 | MICRO SW | VP-533A-OF SPNO #187 | 1 | | ✓ |
| F25 | 3513700800 | LEVER LOCK | POM | 1 | | ✓ |
| F26 | 3518400110 | DIODE HV | HVR-1X-70B | 1 | | ✓ |
| F27 | 3518302300 | CAPACITOR HV | 2100V AC 1.10UF #187 | 1 | KOR-1P55BA | |
| | 3518303401 | | 2100V AC 1.05UF #187 | 1 | KOR-1P55BB | |
| F28 | 3518121000 | TRANS HV | DT-R11A0-1PT | 1 | | ✓ |
| F29 | 7112401011 | TAP SCREW | T1 TRS 4*10 MFZN | 6 | | ✓ |
| F30 | 3516003700 | SPECIAL SCREW | TT3 HEX 4*8 FLG MFZN | 4 | | ✓ |
| F31 | 3510313500 | BASE | SBHG T0.8 | 1 | | ✓ |
| F32 | 3512101400 | FOOT | DASF-310 | 4 | | ✓ |
| F33 | 3515202800 | STOPPER HINGE U AS | KOR-121M0A | 1 | | ✓ |
| F34 | 3511410000 | INNER COVER | PP(NATURAL) | 1 | | ✓ |
| F35 | 7272400811 | SCREW TAPTITE | TT2 TRS 4*8 MFZN | 2 | | ✓ |
| F37 | 3511410100 | COVER STIRRER | PP | 1 | | ✓ |
| F38 | 3517402400 | COUPLER STIRRER | PPS | 1 | | ✓ |
| F39 | 3517101200 | STIRRER BLADE | AL050-H18 T0.7 | 1 | | ✓ |
| F40 | 7S422X4081 | SCREW SPECIAL | TT3 TRS 4*8 SE MFZN | 1 | | ✓ |
| F41 | 3513003200 | CAPACITOR HOLDER | SECC T0.6 | 1 | | ✓ |
| F42 | 7S627W50X1 | NUT HEX | NUT FLANGE M5*0.8P MFZN | 4 | | ✓ |
| F43 | 3518608600 | NOISE FILTER | DWLF-M17 | 1 | ONLY KOR-1P55BB | |

TMW-1100M

EXPLODED VIEW AND PARTS LIST (MECHANICAL)

1. DOOR ASSEMBLY
Refer to Disassembly and assembly.
2. CONTROL PANEL ASSEMBLY
Refer to Disassembly and assembly.
3. TOTAL ASSEMBLY



T MW-1100M

✓ **Caution** : In this Service Manual, some parts can be changed for improving, their performance without notice in the parts list. So, if you need the latest parts information, please refer to PPL(Parts Price List) in Service Information Center (<http://svc.dwe.co.kr>).

| NO | PART CODE | PART NAME | DESCRIPTION | QTY | NOTE | PUBLIC USE |
|-----|------------|--------------------|--------------------------|-----|-----------------|------------|
| A00 | 3511718600 | DOOR AS | KOR-1P55BA | 1 | | ✓ |
| B00 | PKCPSWAJ00 | CONTROL-PANEL AS | KOR-1P5CBA | 1 | | |
| F01 | 3518115700 | CAVITY AS | KOR-1P55BA | 1 | | ✓ |
| F02 | 3518902600 | THERMOSTAT | OFF:90 ON:60 H #187 | 1 | | |
| F03 | 7121400611 | TAP SCREW | T2S PAN 4*6 MFZN | 1 | | ✓ |
| F04 | 3966820710 | STIRRER MOTOR | 120V 2.4W ST-16 KX63MRAA | 1 | | ✓ |
| F05 | 7121400611 | TAP SCREW | T2S PAN 4*6 MFZN | 1 | | ✓ |
| F06 | 35113UANT5 | POWER CORD AS | 3*14AWG 60*60 120-RTML | 1 | KOR-1P5CBA | |
| | 35113UHWT5 | | 3*14AWG 90*90 120-RTML | | KOR-1P5CBB | |
| F07 | 7122401011 | TAP SCREW | T2S TRS 4*10 MFZN | 1 | | ✓ |
| F08 | 3511409500 | OUTER COVER | SBHG 0.8T | 1 | | ✓ |
| F09 | 7122401211 | TAP SCREW | T2S TRS 4*12 MFZN | 1 | | |
| F10 | 7272400811 | SCREW TAPTITE | TT3 TRS 4*8 MFZN | 1 | | ✓ |
| F11 | 3510806800 | CABINET | STS 430 T0.5 HL | 1 | | |
| F12 | 7121403011 | TAP SCREW | T2S PAN 4*30 MFZN | 2 | | ✓ |
| F13 | 3963822710 | MOTOR SHADE POLE | 120V 30W 15DWX1-K03 | 1 | | ✓ |
| F14 | 3512515300 | AIR GUIDE | PP | 1 | | ✓ |
| F15 | 3511800100 | FAN | PP GP20 | 1 | | ✓ |
| F16 | 3518903500 | THERMOSTAT | OFF:150 ON:60 H #187 | 1 | | |
| F17 | 3518003800 | MAGNETRON | RM259(STUD) | 1 | | ✓ |
| F18 | 3513601500 | LAMP | BL 125V 25W T25 C5A H18 | 1 | | ✓ |
| F19 | 3513816000 | LOCK | PP | 1 | | ✓ |
| F20 | 3513702100 | LEVER MICRO SW | POM | 1 | | ✓ |
| F21 | 4415A17352 | MICRO SW | VP-533A-OF SPNO #187 | 1 | | ✓ |
| F22 | 4415A66000 | MICRO SW | VP-532A-OF | 1 | | |
| F23 | 4415A17352 | MICRO SW | VP-533A-OF SPNO #187 | 1 | | ✓ |
| F24 | 3513700800 | LEVER LOCK | POM | 1 | | ✓ |
| F25 | 3518400110 | DIODE HV | HVR-1X-70B | 1 | | ✓ |
| F26 | 3518302300 | CAPACITOR HV | 2100V AC 1.10UF #187 | 1 | KOR-1P5CBA | |
| | 3518303401 | | 2100V AC 1.05UF #187 | 1 | KOR-1P5CBB | |
| F27 | 3518121000 | TRANS HV | DT-R11A0-1PT | 1 | | ✓ |
| F28 | 7112401011 | TAP SCREW | T1 TRS 4*10 MFZN | 6 | | ✓ |
| F29 | 3516003700 | SPECIAL SCREW | TT3 HEX 4*8 FLG MFZN | 4 | | ✓ |
| F30 | 3510313500 | BASE | SBHG T0.8 | 1 | | ✓ |
| F31 | 3512101400 | FOOT | DASF-310 | 4 | | ✓ |
| F32 | 3515202800 | STOPPER HINGE*U AS | KOR-121M0A | 1 | | ✓ |
| F33 | 3511410000 | INNER COVER | PP(NATURAL) | 1 | | ✓ |
| F34 | 7272400811 | SCREW TAPTITE | TT2 TRS 4*8 MFZN | 2 | | ✓ |
| F36 | 3511410100 | COVER STIRRER | PP | 1 | | ✓ |
| F37 | 3517402400 | COUPLER STIRRER | PPS | 1 | | ✓ |
| F38 | 3517100900 | STIRRER BLADE | AL050-H18 T0.7 | 1 | | |
| F39 | 7S422X4081 | SCREW SPECIAL | TT3 TRS 4*8 SE MFZN | 1 | | ✓ |
| F40 | 3513003200 | CAPACITOR HOLDER | SECC T0.6 | 1 | | ✓ |
| F41 | 7S627W50X1 | NUT HEX | NUT FLANGE M5*0.8P MFZN | 4 | | ✓ |
| F42 | 4415A66910 | MICRO SW | VP-531A-OF/SZM-V16-FA | 1 | | |
| F43 | 3518606600 | NOISE FILTER | DWLF-M17 | 1 | ONLY KOR-1P5CBB | |